

* = beladen / laden

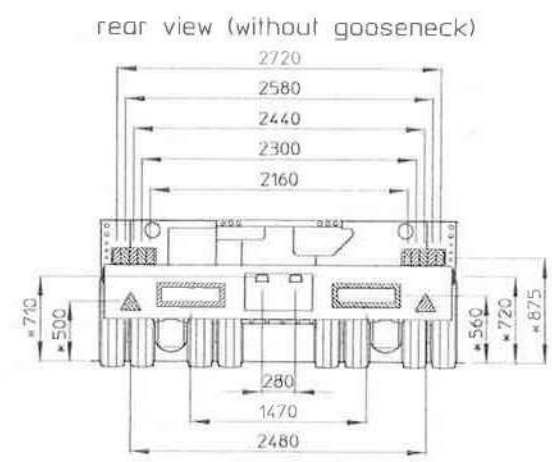
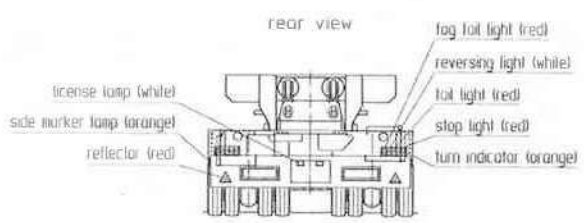
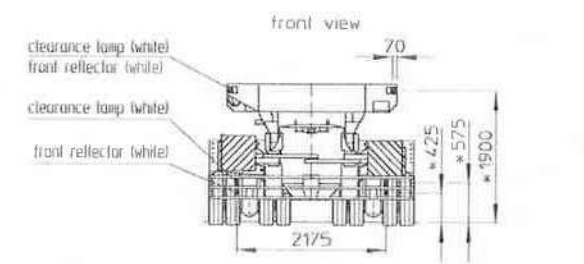
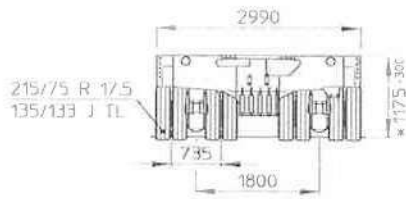
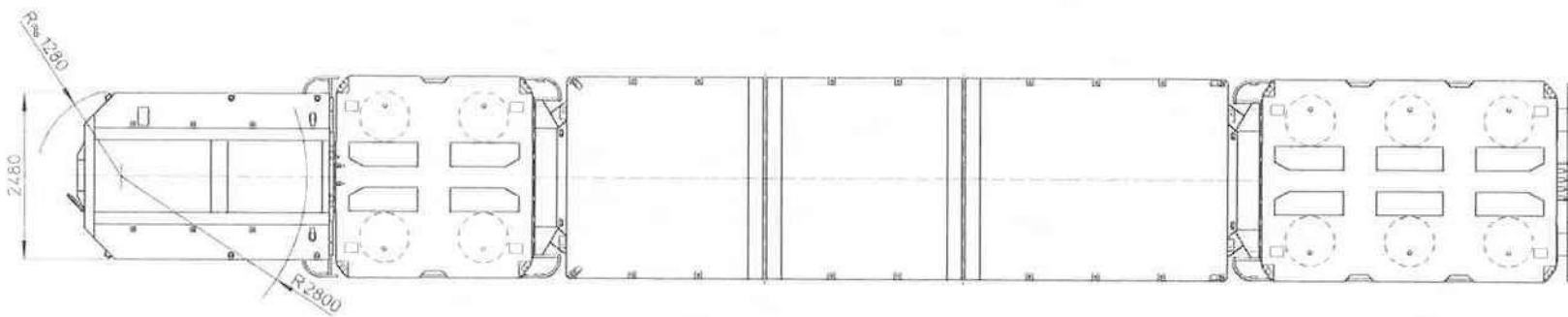
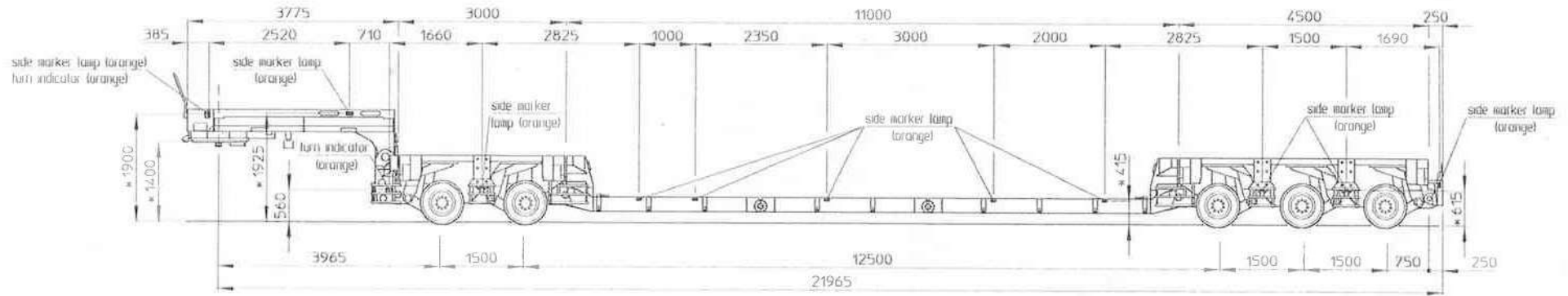
Technische Änderungen vorbehalten / Subject to technical alterations

STHP-SL 7 (3+2+2)



Goldhofer

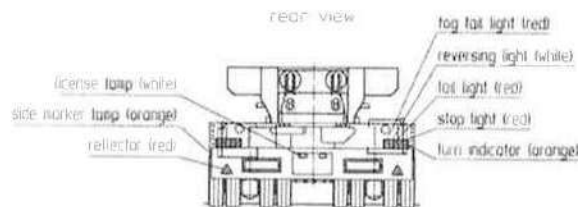
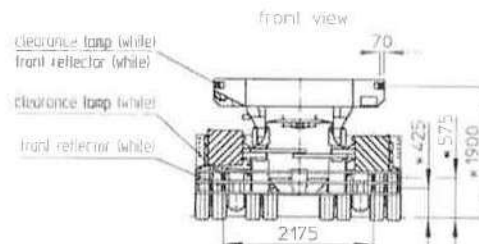
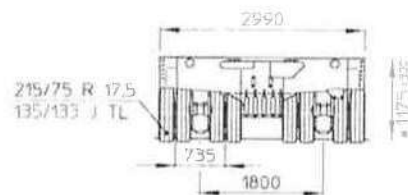
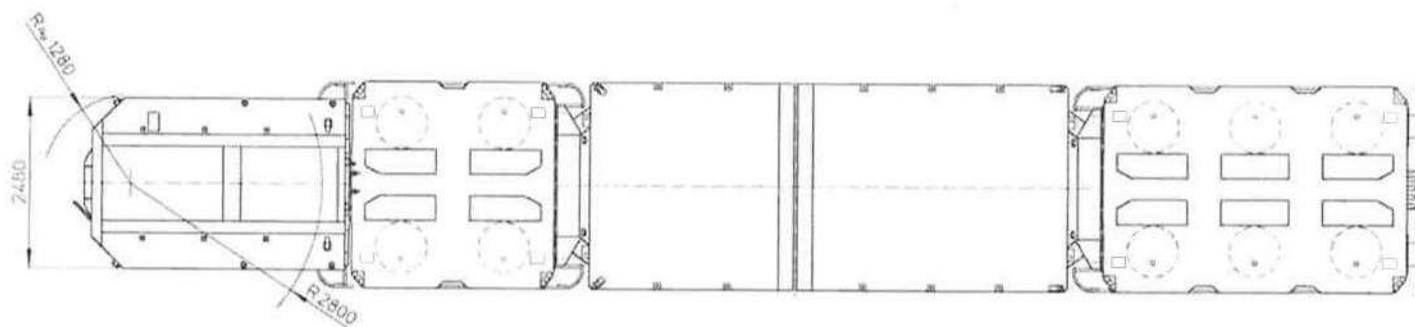
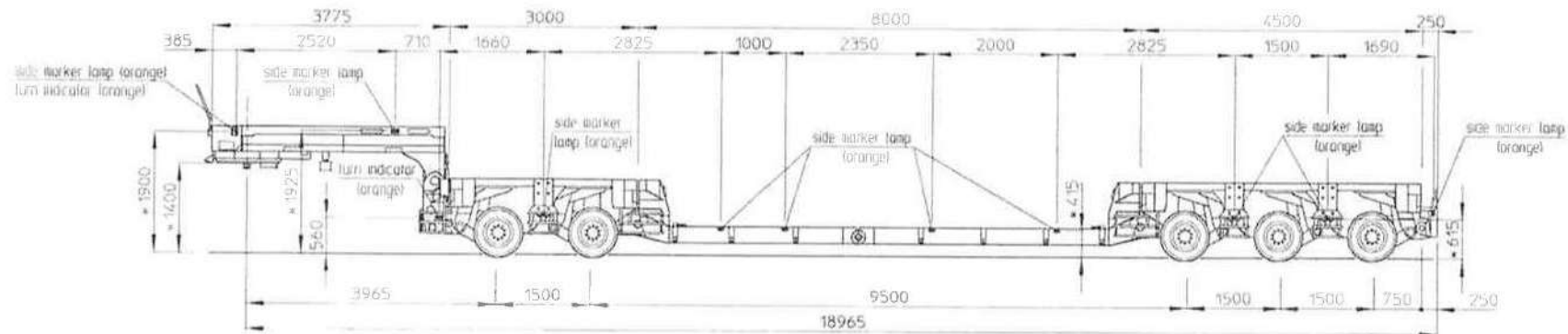
Zeichnungsnummer CAD	0000000000
Revisionsnummer	0000000000
Datum	2009.03.13.02
Gezeichnet	



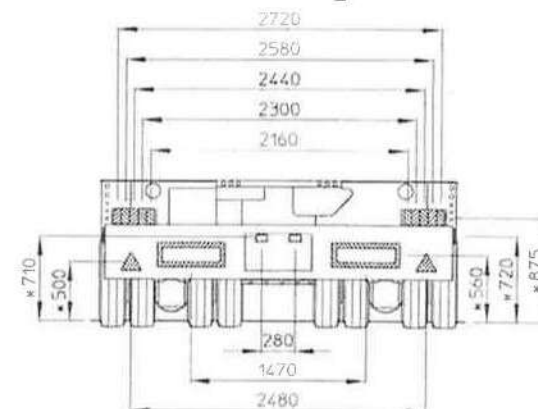
STHP/SL 5 FB (2+3)
Lighting System

2536583 A / 17.11.2016 VP5422

* - Details / footers
Technische Änderungen vorbehalten / Subject to technical alterations



rear view (without gooseneck)



STHP/SL 5 FB (2+3)
Lighting System

2539533 A 1/ 21.11.2016 VP5422

• • beladen / laden
Technische Änderungen vorbehalten / Subject to technical alterations